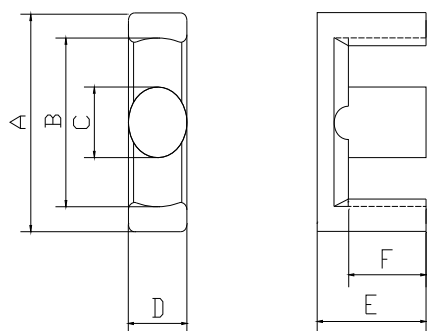
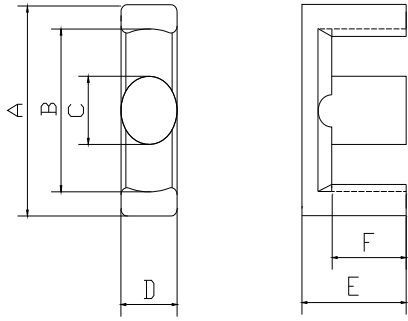


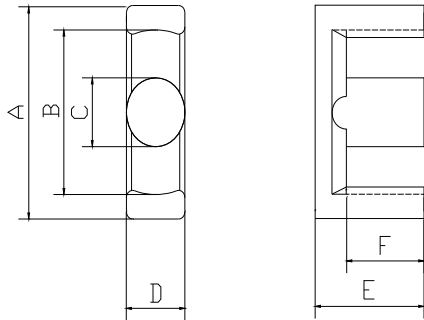
型号	Type	EC24.4	EC25	EC2819	EC2828	EC2828N	EC2834
尺寸 Dimension (mm)	A	24.70±0.60	16.00±0.30	28.55±0.55	28.50±0.60	28.50 ^{+0.60} _{-0.50}	28.50±0.60
	φ B	18.80min	11.60	21.40min	21.20min	21.20min	21.20min
	φ C	8.30±0.30	4.00±0.20	9.90±0.25	9.90±0.25	9.90±0.25	9.90±0.25
	D	8.30±0.30	4.80±0.20	11.40±0.25	11.40±0.25	11.40±0.25	11.40±0.25
	E	14.45±0.15	12.20±0.20	9.70±0.20	14.20±0.20	14.00±0.20	17.10±0.30
	F	10.10±0.20	10.20±0.20	6.20±0.25	9.80 min	9.65±0.25	12.70±0.30
磁芯常数 C ₁ (mm ⁻¹) Core Factor		1.18		0.64	0.80	0.78	0.93
有效磁路长度 l _e (mm) Effective Length l _e		62.7	34.6	50.2	65.2	64.0	76.2
有效截面积 A _e (mm ²) Effective Area		53.0	19.8	79.0	81.0	82.1	82.1
有效体积 V _e (mm ³) Effective Volume		3323	685	3950	5281	5254	6256
重量 w Weight(g)		18.5	3.3	19.5	27.0	27.2	31.5
电感系数 A _L (nH/N ²)	HP40	1900±25%	1100±25%	3700±25%	2800±25%	2800±25%	2520±25%
	HP44						
	HB5K						
	PA7K						
	PA10K						
	PA15K						



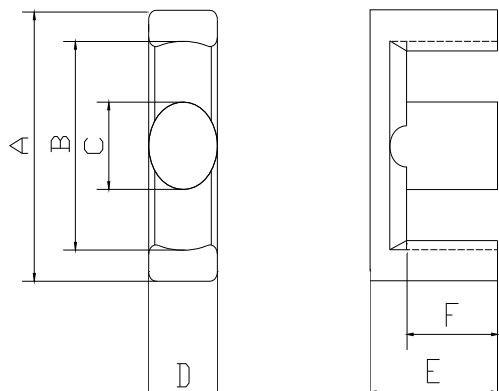
型号	Type	EC2834N	EC2928	EC2934	EC3016	EC3019N	EC3435
尺寸 Dimension (mm)	A	28.50 ^{+0.60} _{-0.50}	29.00±0.50	29.00±0.50	30.00±0.40	30.00±0.50	34.20±0.60
	φ B	21.20min	21.80min	21.80min	26.00±0.40	25.40 ±	26.00min
	φ C	9.90±0.25	9.90±0.25	9.90±0.25	11.00±0.20	13.30±0.20	10.80±0.30
	D	11.40±0.25	11.40±0.25	11.40±0.25	20.00±0.30	20.30±0.30	10.80±0.30
	E	16.90±0.25	14.00±0.30	16.90±0.25	8.00±0.15	9.40±0.15	17.50±0.30
	F	12.50±0.25	9.70±0.20	12.50±0.30	5.30 ^{+0.20} _{-0.10}	6.70 ^{+0.30} ₀	12.30±0.20
磁芯常数 C ₁ (mm ⁻¹) Core Factor		0.92	0.79	0.93	0.39	0.33	0.82
有效磁路长度 l _e (mm) Effective Length l _e		75.4	65.0	76.4	43.2	45.2	79.4
有效截面积 A _e (mm ²) Effective Area		82.1	82.0	82.1	109	135.3	97.0
有效体积 V _e (mm ³) Effective Volume		6190	5330	6272	4708	6115.6	7701.8
重量 w Weight(g)		31	27.4	31.6	26.0	33.7	38.8
电感系数 A _L (nH/N ²)	HP40	2520±25%	2800±25%	2520±25%	5700±25%	5900±25%	2450±25%
	HP44						
	HB5K						
	PA7K						
	PA10K						
	PA15K						



型号	Type	EC35-3	EC3534	EC3539	EC3541	EC3542	EC3543
尺寸 Dimension (mm)	A	35.00±0.70	35.00±0.50	35.30±0.70	35.30±0.50	35.30±0.70	35.30 ^{+1.00} ₀
	φ B	26.00min	26.00min	26.40min	26.40min	26.40min	26.40min
	φ C	11.20±0.20	11.30±0.30	11.30±0.30	11.30±0.30	11.30±0.30	11.30±0.30
	D	11.20±0.20	11.30±0.30	11.30±0.30	11.30±0.30	11.30±0.30	11.30±0.30
	E	18.20±0.20	16.80±0.30	19.30±0.30	20.90±0.30	21.00±0.30	21.50±0.30
	F	12.20±0.20	10.80±0.30	13.3±0.30	15.40±0.30	15.20±0.20	15.50±0.30
磁芯常数 C ₁ (mm ⁻¹) Core Factor		0.71	0.65	0.75	0.83	0.84	0.84
有效磁路长度 l _e (mm) Effective Length l _e		75.4	70.6	79.8	87.8	88.6	89.8
有效截面积 A _e (mm ²) Effective Area		106.8	110.0	109.0	105.0	106.0	107.0
有效体积 V _e (mm ³) Effective Volume		8057	7766	8925	9219	9391.6	9608.6
重量 w Weight(g)		44.0	42.0	47.3	48.9	49.8	50.9
电感系数 A _L (nH/N ²)	HP40	4000±25%	4300±25%	3800±25%	3500±25%	3200±25%	2800±25%
	HP44						
	HB5K						
	PA7K						
	PA10K						
	PA15K						



型号	Type	EC3543A	EC3928	EC3940	EC3944	EC40	EC4042
尺寸 Dimension (mm)	A	36.00 ^{+0.90} _{-0.70}	39.10±0.90	39.10±0.90	39.10±0.90	40.00±0.70	40.00 ^{+0.80} _{-0.50}
	φ B	27.30min	29.30min	29.30min	29.30min	28.70min	30.70min
	φ C	11.30±0.30	12.50±0.30	12.50±0.30	12.50±0.30	13.30±0.30	14.00±0.25
	D	11.30±0.30	12.50±0.30	12.60±0.40	12.50±0.30	13.30±0.40	15.00±0.20
	E	21.60±0.20	14.00±0.20	19.80±0.30	22.20±0.20	22.40±0.30	21.30±0.20
	F	15.60±0.30	8.80±0.30	14.60±0.40	17.00±0.30	15.40±0.30	15.30±0.20
磁芯常数 C ₁ (mm ⁻¹) Core Factor		0.85	0.55	0.74	0.81	0.66	0.61
有效磁路长度 l _e (mm) Effective Length l _e		90.4	68.9	92.1	101.7	98.0	96.3
有效截面积 A _e (mm ²) Effective Area		107.0	125.0	125.0	125.0	149.0	158.0
有效体积 V _e (mm ³) Effective Volume		9672.8	86125	11512.5	12712.5	14602	15215.4
重量 w Weight(g)		51.3	45.6	63	62.4	77.4	76
电感系数 A _L (nH/N ²)	HP40	2600±25%	3900±25%	3900±25%	3100±25%	3620±25%	3800±25%
	HP44						
	HB5K						
	PA7K						
	PA10K						
	PA15K						



型号	Type	EC4215					
尺寸 Dimension (mm)	A	42.00±0.80					
	φ B	30.50min					
	φ C	15.10max					
	D	15.20±0.30					
	E	22.40±0.30					
	F	15.40±0.30					
磁芯常数 C_1 (mm^{-1}) Core Factor		0.54					
有效磁路长度 l_e (mm) Effective Length l_e		97.2					
有效截面积 A_e (mm^2) Effective Area		179.0					
有效体积 V_e (mm^3) Effective Volume		17398.8					
重量 w Weight(g)		92					
电感系数 $A_L(\text{nH}/\text{N}^2)$	HP40	3900±25%					
	HP44						
	HB5K						
	PA7K						
	PA10K						
	PA15K						