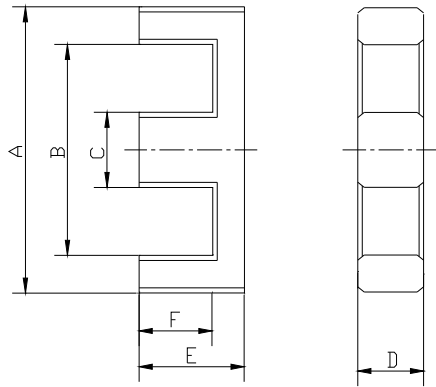
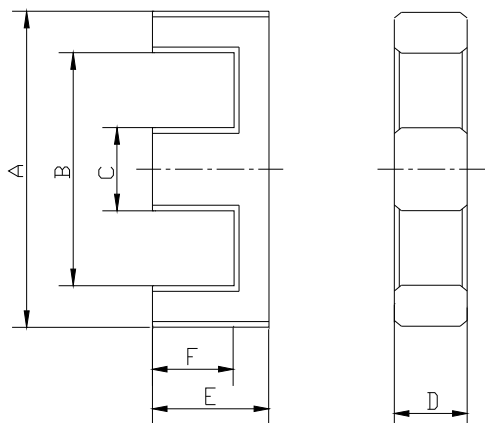


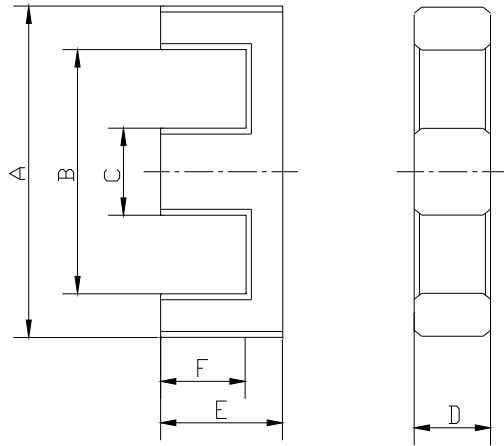
型号	Type	EE5	EE8.3	EE1011	EF12.6	EE1312	EE1614
尺寸 Dimension (mm)	A	5.25±0.10	8.30±0.20	10.20±0.30	12.65±0.45	13.20±0.30	16.10±0.40
	B	3.80min	6.00min	7.50min	8.80min	9.80min	11.70min
	C	1.35±0.10	1.85±0.15	2.50±0.20	3.65±0.20	2.60±0.20	4.00±0.30
	D	1.95±0.10	3.90±0.20	4.85±0.20	3.60±0.20	5.90±0.30	4.80±0.30
	E	2.65±0.10	4.00±0.15	5.50±0.20	6.45±0.20	6.10±0.20	7.10±0.20
	F	2.00±0.10	3.00±0.15	4.30±0.20	4.65±0.20	4.70±0.20	5.20±0.20
磁芯常数 C_1 (mm^{-1}) Core Factor		4.85	2.57	2.27	2.32	1.92	1.85
有效磁路长度 l_e (mm) Effective Length l_e		12.63	19.51	26.34	29.75	30.88	35.01
有效截面积 A_e (mm^2) Effective Area		2.6	7.58	11.61	12.82	16.08	18.88
有效体积 V_e (mm^3) Effective Volume		32.88	147.84	305.87	381.27	496.7	660.87
重量 w Weight(g)		0.2	0.9	1.5	1.9	2.7	3.3
电感系数 $A_L(\text{nH}/\text{N}^2)$	HP40	250±25%	610±25%	810±25%	830±25%	1100±25%	1100±25%
	HP44	270±25%	630±25%	900±25%		1200±25%	1220±25%
	HB5K		1000±25%			1900±25%	2050±25%
	PA7K		1280±25%			2500±25%	2600±25%
	PA10K	640±25%	1500±25%	2300±30%		2900±30%	3200±30%
	PA15K		2500±25%				



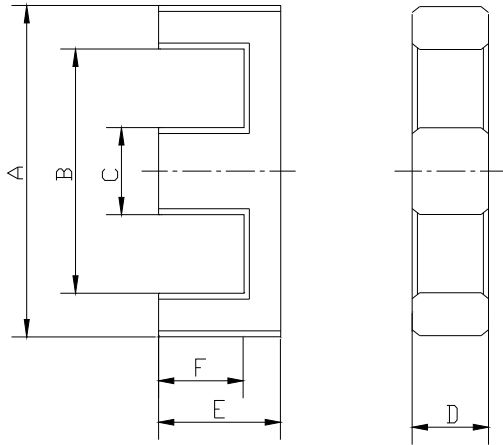
型号	Type	EE161407	EE1614W	EE1616S-1	EF16	EE16L	EE161010
尺寸 Dimension (mm)	A	16.00±0.40	16.00±0.40	16.00±0.60	16.00±0.60	16.00±0.40	16.00±0.40
	B	12.70min	11.70min	11.80min	11.30min	11.70min	11.70min
	C	3.00±0.20	3.80±0.20	4.50±0.20	4.50±0.20	4.00±0.20	4.15±0.25
	D	6.80±0.30	6.80±0.20	4.50±0.20	4.50±0.20	4.90±0.20	10.10±0.30
	E	7.20±0.20	7.40±0.20	8.10±0.20	8.10±0.20	12.30±0.20	5.00±0.15
	F	5.60±0.20	5.50±0.20	6.00±0.20	6.00±0.20	10.20±0.20	3.05±0.20
磁芯常数 C_1 (mm^{-1}) Core Factor		1.79	1.39	2.03	1.94	2.86	0.66
有效磁路长度 l_e (mm) Effective Length l_e		37.24	36.30	38.07	37.93	55.29	26.36
有效截面积 A_e (mm^2) Effective Area		20.82	26.07	18.77	19.52	19.36	40.07
有效体积 V_e (mm^3) Effective Volume		775.39	946.32	714.68	740.48	1070.7	1056.15
重量 w Weight(g)		4.2	4.8	3.7	3.7	5.3	5.4
电感系数 A_L (nH/N ²)	HP40	1200±25%	1300±25%	1100±25%	1100±25%	700±25%	3300±25%
	HP44						
	HB5K						
	PA7K						
	PA10K						
	PA15K						



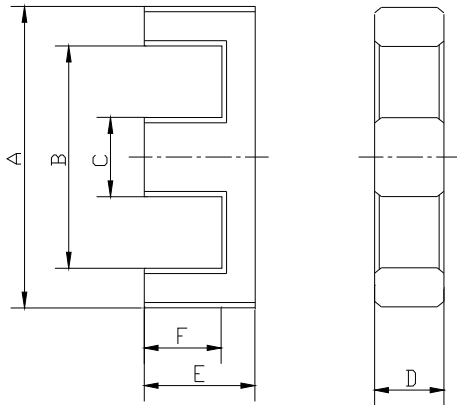
型号	Type	EE140507	EE181008	EE1916B	EE19M	EE19L	EE19.3
尺寸 Dimension (mm)	A	14.00±0.30	18.00±0.35	19.00±0.40	19.00±0.40	19.00±0.40	19.30±0.40
	B	10.70min	13.70min	13.70min	14.10min	13.50min	14.10min
	C	3.00±0.20	4.00±0.20	4.85±0.25	4.65±0.25	4.85±0.25	4.85±0.25
	D	5.00±0.30	10.00±0.30	4.85±0.25	6.80±0.25	4.85±0.25	6.80±0.20
	E	3.55±0.15	4.35±0.15	8.00±0.20	8.00±0.20	13.60±0.30	7.95±0.20
	F	2.05±0.15	2.35±0.15	5.70±0.20	5.65±0.25	11.40±0.30	5.80±0.20
磁芯常数 C_1 (mm^{-1}) Core Factor		1.39	0.64	1.75	1.28	2.69	1.28
有效磁路长度 l_e (mm) Effective Length l_e		20.91	25.68	39.65	39.77	62.04	39.99
有效截面积 A_e (mm^2) Effective Area		15.0	40.0	22.69	33.13	23.10	31.27
有效体积 V_e (mm^3) Effective Volume		313.69	1027.33	899.70	1237.94	1433.01	1250.36
重量 w Weight(g)		1.6	5.3	4.6	6.3	7.4	6.3
电感系数 $A_L(\text{nH}/\text{N}^2)$	HP40			1200±25%	1700±25%	800±25%	
	HP44						
	HB5K						
	PA7K						
	PA10						
	PA15						



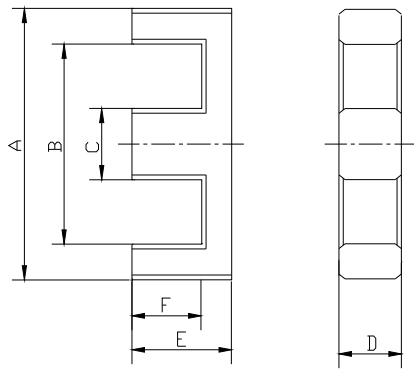
型号	Type	EF20	EE2027	EE2220	EE22L	EE2520	EE25E
尺寸 Dimension (mm)	A	20.00±0.40	20.00±0.40	22.00±0.40	22.00±0.50	25.40±0.50	25.40±0.50
	B	14.10min	14.60min	15.60min	15.60min	18.70min	18.70min
	C	5.70±0.20	4.60±0.25	5.75±0.25	5.75±0.25	6.35±0.30	6.35±0.30
	D	5.65±0.25	4.65±0.25	5.75±0.25	5.75±0.25	6.35±0.30	6.35±0.30
	E	9.90±0.20	13.80±0.30	9.90±0.20	15.00±0.20	10.00±0.25	15.85±0.30
	F	7.20±0.20	11.30±0.30	5.80±0.20	11.00±0.20	6.90±0.25	12.70±0.30
磁芯常数 C_1 (mm^{-1}) Core Factor		1.48	2.84	1.19	1.80	1.26	1.88
有效磁路长度 l_e (mm) Effective Length l_e		46.25	63.29	43.75	64.35	50.21	73.63
有效截面积 A_e (mm^2) Effective Area		31.19	22.30	36.91	35.77	39.77	39.08
有效体积 V_e (mm^3) Effective Volume		1442.34	1411.28	1614.67	2301.39	1997.21	2877.35
重量 w Weight(g)		6.7	7.1	7.5	12.0	10.1	14.5
电感系数 $A_L(\text{nH}/\text{N}^2)$	HP40	1570±25%			1300±25%	±25%	1450±25%
	HP44						
	HB5K						
	PA7K						
	PA10k						
	PA15k						



型号	Type	EE25C	EF25D	EF2525	EE2731	EE2818	EE2821
尺寸 Dimension (mm)	A	25.40±0.50	25.05±0.75	25.05±0.75	27.30±0.50	28.00±0.50	28.50±0.50
	B	18.40min	17.50min	17.50min	19.30min	18.60min	20.50min
	C	6.35±0.30	7.20±0.25	7.20±0.25	7.65±0.20	7.20±0.30	7.15±0.30
	D	6.75±0.30	11.00±0.25	7.20±0.30	11.65±0.20	9.70±0.30	10.80±0.20
	E	9.70±0.20	12.55±0.25	12.55±0.25	15.30±0.30	8.80±0.20	10.40±0.30
	F	6.70±0.20	8.95±0.25	8.95±0.25	11.40±0.25	5.40±0.20	6.80±0.30
磁芯常数 C_1 (mm^{-1}) Core Factor		1.18	0.73	1.12	0.78	0.63	0.67
有效磁路长度 l_e (mm) Effective Length l_e		49.20	57.79	57.29	69.70	45.01	52.44
有效截面积 A_e (mm^2) Effective Area		41.87	79.00	51.71	89.78	71.33	78.55
有效体积 V_e (mm^3) Effective Volume		2060.05	4565.44	2988.29	6257.89	3210.1	4119.04
重量 w Weight(g)		10.5	23	14.0	32	17	21
电感系数 $A_L(\text{nH/N}^2)$	HP40	2000±25%	3000±25%	2000±25%	2800±25%	2800±25%	3000±25%
	HP44						
	HB5K						
	PA7K						
	PA10K						
	PA15K						



型号	Type	EE2829	EE28F	EE3030/7	EE3026	EE3042	EE3327
尺寸 Dimension (mm)	A	28.50±0.50	28.00±0.50	30.00±0.60	30.00±0.60	30.00±0.60	33.40±0.60
	B	20.50min	18.60min	20.50min	19.70min	19.70min	24.10min
	C	7.15±0.30	7.20±0.30	6.95±0.25	10.70±0.20	10.70±0.20	9.70±0.30
	D	9.90±0.20	10.60±0.30	7.05±0.25	10.70±0.20	10.70±0.20	12.70±0.30
	E	14.60±0.30	10.80±0.25	15.00±0.20	13.00±0.30	20.70±0.30	13.85±0.25
	F	9.90±0.30	6.30±0.20	10.00±0.30	8.15±0.20	16.25±0.20	9.45±0.25
磁芯常数 C_1 (mm^{-1}) Core Factor		0.85	0.58	1.15	0.54	0.84	0.59
有效磁路长度 l_e (mm) Effective Length l_e		65.93	50.27	66.86	57.70	89.25	66.87
有效截面积 A_e (mm^2) Effective Area		77.21	86.77	58.12	107.36	105.67	113.69
有效体积 V_e (mm^3) Effective Volume		5090.36	4362.28	3886.14	6195.04	9431.82	7602.82
重量 w Weight(g)		23	23	21	32	48	39
电感系数 $A_L(\text{nH}/\text{N}^2)$	HP40	2300±25%	3200±25%	1950±25%	3500±25%	2200±25%	3700±25%
	HP44						
	HB5K						
	PA7K						
	PA10K						
	PA15K						



型号	Type	EE3530	EE4035	EE4215	EE5042	EE5555	EE6420
尺寸 Dimension (mm)	A	35.00±0.60	40.00±0.70	42.00±0.80	50.00±1.00	55.15±1.10	64.0±1.30
	B	25.00min	26.80min	29.50min	24.50min	37.50min	52.50min
	C	10.00±0.30	11.60±0.30	12.00±0.30	14.50±0.30	17.00±0.30	10.20±0.20
	D	9.00±0.20	11.60±0.30	15.00±0.30	14.50±0.30	20.40±0.40	50.80±1.10
	E	14.80±0.30	17.30±0.30	21.20±0.40	20.60±0.40	27.90±0.40	10.20±0.15
	F	10.50±0.30	10.30±0.30	15.30±0.40	12.60±0.40	19.40±0.40	5.10±0.15
磁芯常数 C_1 (mm^{-1}) Core Factor		0.86	0.53	0.55	0.35	0.37	0.15
有效磁路长度 l_e (mm) Effective Length l_e		71.76	77.28	98.06	85.56	125.68	79.90
有效截面积 A_e (mm^2) Effective Area		83.67	145.74	177.50	246.9	343.77	519.92
有效体积 V_e (mm^3) Effective Volume		6003.62	11262.77	17406.47	21125.15	43206.01	41540.4
重量 w Weight(g)		31	56	88	109	220	240
电感系数 $A_L(\text{nH}/\text{N}^2)$	HP40	±25%	4000±25%	4700±25%	±25%	5900±25%	12500±25%
	HP44						
	HB5K						
	PA7K						
	PA10K						
	PA15K						