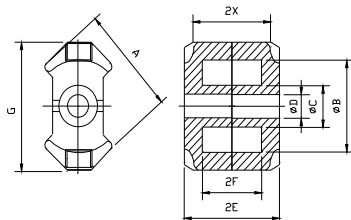


型号	Type	RM4	RM5	RM5	RM6	RM6	RM8
尺寸 Dimension (mm)	A	9.60±0.20	12.05±0.25	12.05±0.25	14.40±0.30	14.40±0.30	19.35±0.40
	φB	8.30±0.20	10.40±0.20	10.40±0.20	12.65±0.25	12.65±0.25	17.30±0.30
	φC	3.80±0.10	4.80±0.10	4.80±0.10	6.30±0.10	6.30±0.10	8.40±0.15
	φD			2.05±0.05		3.05±0.10	
	E	5.20±0.05	5.20±0.10	5.20±0.10	6.20±0.10	6.20±0.10	8.20±0.15
	F	3.60±0.10	3.35±0.20	3.35±0.20	4.20±0.20	4.20±0.20	5.60±0.20
	G	11.10±0.25	14.65±0.25	14.65±0.25	17.60±0.30	17.60±0.30	22.75±0.45
	2X	9.20±0.25	9.30±0.25	9.30±0.25	10.70±0.25	10.70±0.25	14.80±0.25
磁芯常数 C_i (mm^{-1}) Core Factor		1.62	0.93	1.02	0.78	0.86	0.59
有效磁路长度 l_e (mm) Effective Length l_e		22.7	22.1	21.4	28.6	26.9	38.0
有效截面积 A_e (mm^2) Effective Area		14.0	23.8	21.0	36.6	31.3	64.0
有效体积 V_e (mm^3) Effective Volume		318	526	450	1050	840	2430
重量 w Weight(g)		1.9	3.3	3.0	5.5	5.0	12.4
电感系数 $A_L(\text{nH}/\text{N}^2)$	HP40	680min	1250min	980min	1600min	1410min	1950min
	HP44						
	HB5K						
	PA7K						
	PA10K						
	PA15K						



型号	Type	RM8	RM10	RM10	RM12	RM14	
尺寸 Dimension (mm)	A	19.35±0.40	24.15±0.55	24.15±0.55	29.20±0.80	34.20±0.50	
	∅ B	17.30±0.30	21.65±0.45	21.65±0.45	25.45±0.70	29.50±0.50	
	∅ C	8.40±0.15	10.70±0.20	10.70±0.20	12.60±0.40	14.75±0.25	
	∅ D	4.50±0.15		5.50±0.20			
	E	8.20±0.15	9.30±0.15	9.30±0.15	11.70±0.10	14.40±0.10	
	F	5.60±0.20	6.40±0.20	6.40±0.20	8.60±0.20	10.60±0.20	
	G	22.75±0.45	27.85±0.65	27.85±0.65	36.85±1.0	41.60±1.00	
	2X	14.80±0.25	16.70±0.25	16.70±0.25	21.00±0.25	26.20±0.25	
磁芯常数 C_i (mm^{-1}) Core Factor		0.67	0.45	0.50	0.40	0.37	
有效磁路长度 l_e (mm) Effective Length l_e		35.10	44.0	42.0	56.9	69	
有效截面积 A_e (mm^2) Effective Area		52.0	98.0	83.0	140	188	
有效体积 V_e (mm^3) Effective Volume		1840	4310	3470	7960	13000	
重量 w Weight(g)		11.1	20.6	17.0	42.0	70.0	
电感系数 $A_L(\text{nH}/\text{N}^2)$	HP40	1840min	3630min	3400min	4150min	4600min	
	HP44						
	HB5K						
	PA7K						
	PA10K						
	PA15K						